

- Monitors and alerts on device availability, bandwidth utilization and overall network health

- Robust diagnostic tools for troubleshooting and quickly resolving complex issues

- Network discovery and inventory tools

- Simplifies NetFlow analysis and Cisco Configuration management

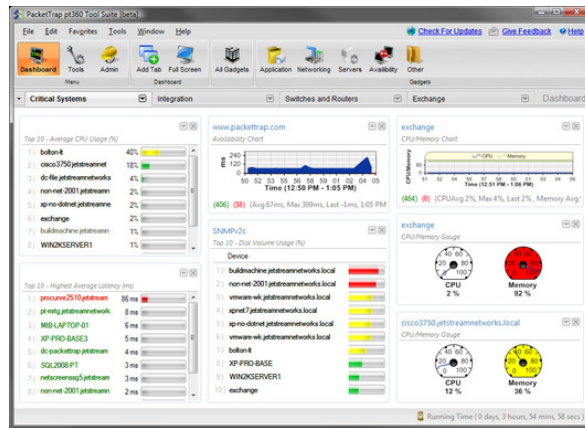
- Supports SNMP, WMI, and Telnet/SSH to manage small and large, complex multi-vendor networks alike

pt360 FREE Tool Suite

PacketTrap's pt360 FREE Tool Suite is collection of scanning, diagnostic, monitoring and other network management tools. These tools are integrated into a single, real-time dashboard that provides users with a comprehensive yet simple-to-use solution. Developed with feedback from more than 30,000 network engineers, pt360 puts charting, reporting and application gadgets at your fingertips and replaces the dozens of disparate IT tools that have littered end-user desktops for years. Unique to pt360 is its integration with browser-based open source networking tools such as Nagios and OpenNMS, its ability to pass data between tools, create custom dashboards, and save network settings and favorites. The powerful solution takes less than 10 minutes to install and allows users to control even the most complicated network.

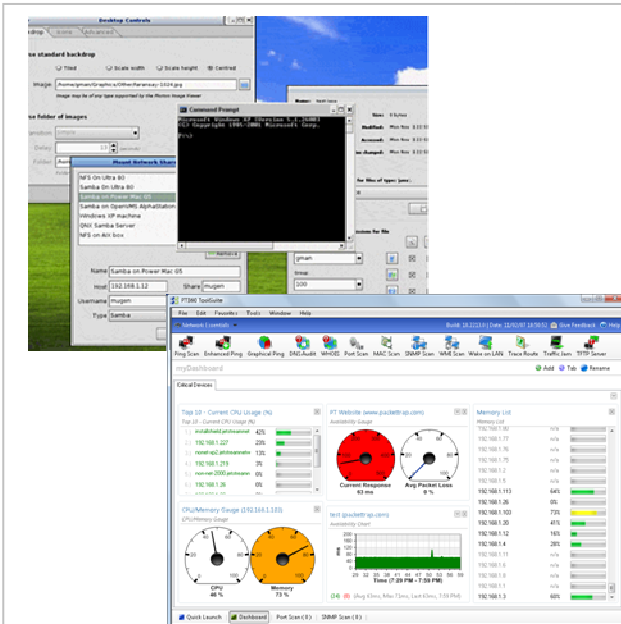
GAIN VISIBILITY INTO REAL-TIME NETWORK PERFORMANCE

At the core of the p360 FREE Tool Suite is the dashboard, a customizable interface that gives network engineers unmatched visibility into their network.



- Companies can reduce IT budgets by as much as 30% with integrated management dashboards that link critical data from infrastructure monitoring software, application portfolio management and project management – *Forrester Research*

The dashboard also provides reassuring insight into possible hardware, software and application failures. It is perfect for organizations with 250-500 end points and makes the ultimate statement in simplicity.



Out with the Old...

- Complex command line tools...
- Isolated point tools that don't communicate with each other...
- Multiple open windows showing assorted, non-integrated tools...

In with the New...

- Integrated diagnostic and discovery tools...
- Customizable, real-time monitoring dashboard...
- Unmatched data flow between tools...

pt360 Solutions for Real Problems

Problem	Pt360 Solution with One Click
No idea what devices are on the network	Network Discovery - Performs one of the industry's fastest scans of entire network to identify and create an inventory of all network devices.
Slow network	NetFlow - Captures data into useful reports that quantify exactly how the corporate network is being utilized.
Email is down	Exchange Gadget - Monitors running services, process availability, mail queues, performance counters and host server health for MS Exchange.
Sluggish laptop	Device Details - Searches for unauthorized software and running processes that are causing CPU or memory spikes.
Time to pinpoint network problems	Integrated - Saves time by allowing all tools to interact and passes information between tools in use.
Restore connectivity for remote employees / locations within seconds	Cisco Config - Uploads 'last known good configuration' to router that is causing the issue.
Quickly shutdown traffic from an unauthorized device on the network	Switch Port Mapper - Finds and disables the interface used by the unauthorized device.

Key Tools and Features

Dashboard

A summary display of key performance indicators (KPIs) and diagnostic metrics of network performance and availability. Managers and operations staff can continuously monitor key assets.

- Drag and Drop gadgets enables custom views
- Monitors availability, CPU, memory, disk space, interface traffic, network latency and packet loss

Application Monitoring

Provides in-depth visibility of running processes and performance counters for mission-critical applications.

- Identifies application degradations early so IT Admins can prevent failures
- Provides out of box support for monitoring MS Exchange, SQL Server and Active Directory

Syslog Server

Receives, logs, and displays syslog messages from hosts such as routers, switches, and any other syslog enabled devices.

- Ensures that IT departments are the first to know about network issues
- Provides detailed information like facility, severity, date/time, host name, and key words

Cisco® Configuration Tools

This robust tool eases configuration and change management of Cisco® devices in lieu of one-off non-integrated point tools.

- Downloads, modifies, compares and uploads device configuration files all from a single interface
- Auto archives config files for rapid recovery

Integration with PacketTrap Perspective and MSP

The pt360 FREE Tool Suite integrates seamlessly with PacketTrap Perspective, enabling you to run any tool against a device.

- Delivers instant access to the tools you need for deeper troubleshooting of network issues
- Eliminates time spent looking and moving between point diagnostic tools

Switch Port Mapper

The tool discovers devices connected to each port on a switch. It provides device visibility like IP address, MAC address, VLAN, port name and availability, as well as capabilities to enable or disable an interface.

- Eliminates need to manually trace network cables
- Exports results to CSV, XML, HTML for easy documentation

TFTP Server

Multi-threaded and highly scalable; this tool supports unlimited simultaneous transfers.

- Facilitates rapid firmware upgrades and configuration changes to network equipment
- Has seamless integration with PacketTrap Cisco® Config Tools

Network Discovery and Inventory

Leveraging SNMP, PacketTrap performs one of the industry's fastest network scans and provides a complete set of attributes for each device.

- Gathers all technical data including hardware, software and processes for each device.
- Stores all inventory information locally for quick access and ability to run reports

Encrypted Credential Store

A single location that consolidates Windows, SNMP, SSH, and FTP credentials for quick and simple diagnostics. It utilizes 256-bit AES Encryption for ultimate security.

- Shares credentials across devices groups safely and automatically
- Eliminates retyping credentials or hostnames

NetFlow Listener

Captures flow data from continuous streams of network traffic and converts raw data into useful charts, tables and tree hierarchy. It supports Cisco® NetFlow v1, 3, 5, 7 and 9.

- Identifies applications, conversations, devices, endpoints and protocols consuming bandwidth
- Automates enabling NetFlow, thus eliminating the need to do a manual configuration

For more information, visit:
www.PacketTrap.com/product

PacketTrap Networks
 118 Second Street
 6th Floor
 San Francisco, CA 94105

1-866-MY-pt360
 (1-866-697-8360)
Sales@PacketTrap.com

pt360 in Chart

Enhanced Ping	Free
Graphical Ping	Free
Ping Scan	Free
Trace Route	Free
DNS Audit	Free
Port Scan	Free
SNMP Scan	Free
Traffic Jam	Free
Wake on LAN	Free
Switch Port Mapper	Free
NetFlow Listener	Free
Dashboard	Free
Availability	Free
CPU Utilization	Free
Memory Utilization	Free
Disk Utilization	Free
Network Interface Utilization	Free
Open source integration	Free
Average latency	Free
Average Packet Loss	Free
Syslog Server	Free
TFTP Server	Free
Downloader	Free
Uploader	Free
Editor/Viewer	Free
Comparison Engine	Free
Archiving	Free
Password Decryption	Free
MS Exchange	Free
MS SQL Server	Free
MS Active Directory	Free
WHOIS	Free
Network Discovery	Free
Network Inventory	Free
Trace Route	Free
WMI Scan	Free
MAC Scan	Free